

# Aphid Alert

## Aphid Field Identification Guide

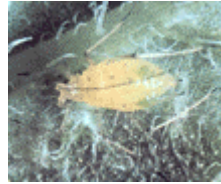
E. B. Radcliffe, University of Minnesota



**Potato Aphid,**  
*Macrosiphum*  
*euphorbiae* (Thomas)



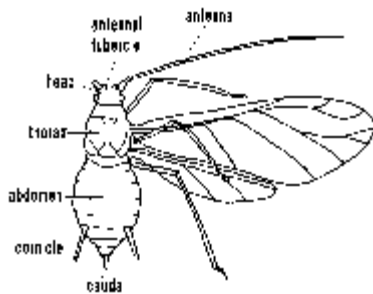
**Buckthorn Aphid,**  
*Aphis nasturii*  
(Kaltenbach)



**Foxglove Aphid,**  
*Aulacorthum solani*  
(Kaltenbach)



**Green Peach Aphid,**  
*Myzus persicae*  
(Sulzer)



### KEY TO IDENTIFY WINGLESS FORMS OF THE MOST COMMON APHIDS COLONIZING POTATO:

1a. body outline egg or teardrop shaped, cauda short . . . 2

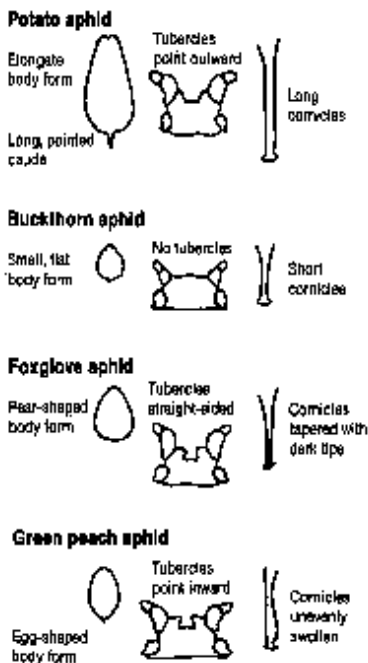
1b. body outline elongate, antennal tubercles large, pointing outward, cauda long and pointed, cornicles longer than the distance between their bases (Fig. 2a), legs prominent, color green, yellow, or pink, may have a darker dorsal stripe, highly mobile aphids . . . **POTATO APHID**

2a. body thick, head with prominent antennal tubercles, antennae as long or longer than body . . . 3

2b. body flattened, head without prominent antennal tubercles, antennae shorter than length of body, cornicles almost as short as cauda (Fig. 2b), color opaque lemon yellow to green in color, black in autumn . . . **BUCKTHORN APHID**

3a. body pear shaped, widest at base of cornicles, antennal tubercles prominent and almost parallel sided, cornicles tapered with prominent flanges on the dark tip (Fig. 2c), color light yellow green to dark green, with dark areas around base of cornicles, legs and antennae with dark joints . . . **FOXGLOVE APHID**

3b. body egg shaped, almost the same width from base of middle legs to base of cornicles, antennal tubercles prominent and pointing inward, cornicles unevenly swollen (Fig. 2d), color light green to almost translucent, pink, or peach, legs and cornicles the same color as the body . . . **GREEN PEACH APHID**



Figures adapted from MacGillivray (1979), Aphids infesting potatoes in Canada: a field guide.